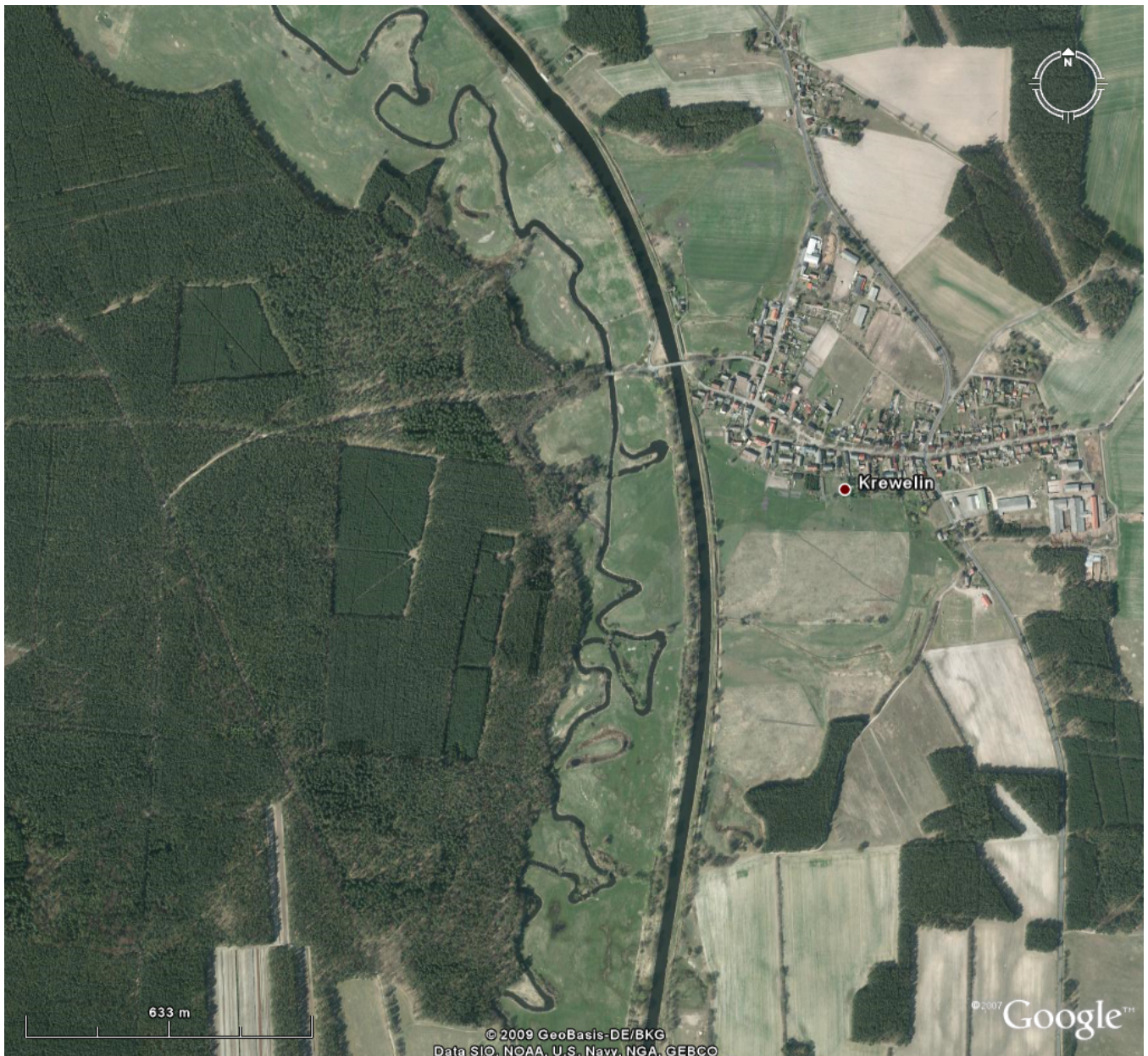


[River Havel – Germany, Small restoration measure](#) **[1]**



This highly meandering fast flowing river stretch parallels the water ways Obere-Havel Wasserstrasse and Havel-Oder Wasserstrasse; nowadays it is additionally highly influenced by beaver dams.

- **Site name:** Upstream Malz
- **Typology:** Mid-sized lowland river
- **Altitude:** 41 m
- **Catchment area:** 1,753 km²
- **Pressures before the restoration:**
 - water abstraction
 - minimum flow release
 - diffuse nutrient input
 - fragmentation by weirs
- **Restoration measures conducted:**

◦ none

- [Home](#)
- [Imprint](#)

Source URL: <https://reformrivers.eu/river-havel-%E2%80%93-germany-small-restoration-measure>

Links

[1] <https://reformrivers.eu/river-havel-%E2%80%93-germany-small-restoration-measure>